

June 14, 1955

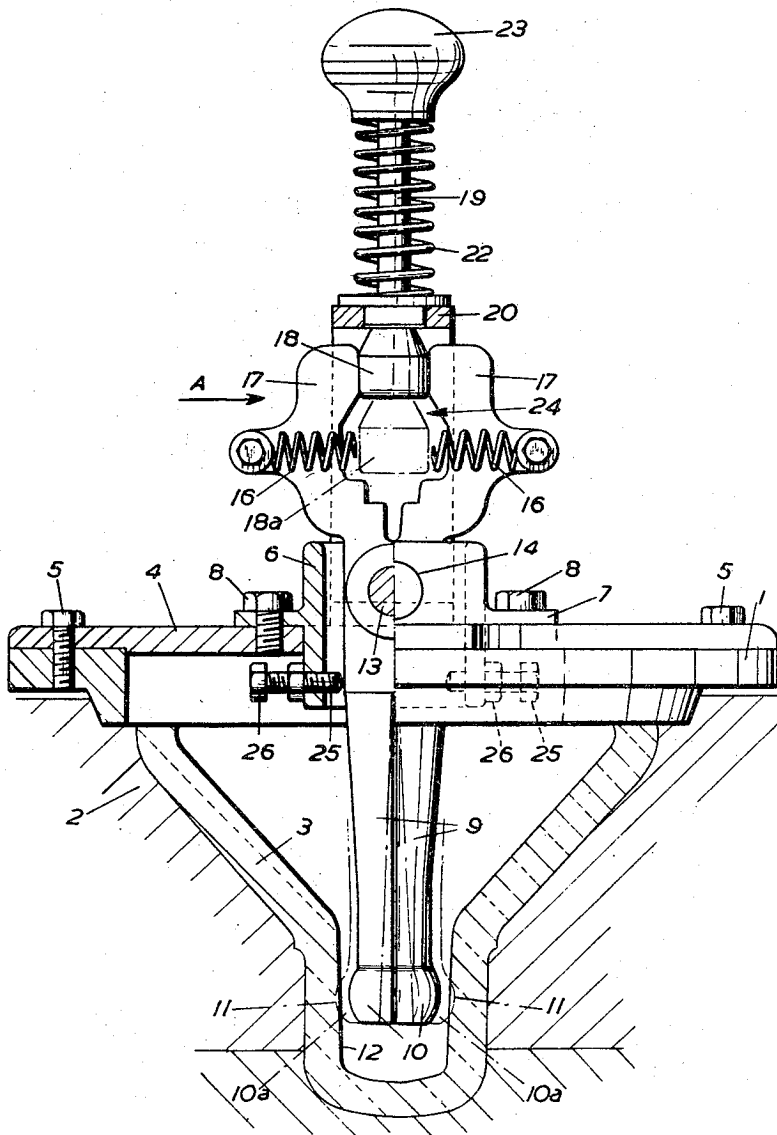
J. E. WILCOCK  
APPARATUS FOR FORMING CAVITIES IN THE WALL  
OF A SOCKET OF A PIN-TYPE GLASS INSULATOR

2,710,492

Filed Oct. 27, 1952

4 Sheets-Sheet 1

FIG. 1.



Inventor  
*John E. Wilcock*  
By  
*Marion Kenneth Campbell* Attorneys